



TRANSPORT STATISTICS

SUMMARY REPORT

(2024)

BY

THE TOURISM, TRANSPORT AND COMMUNICATION STATISTICS UNIT

June, 2025

Table of Contents

List of Figures	2
List of Acronyms and Abbreviations	3
Foreword.....	4
1.0: AIR TRANSPORTS STATISTICS	5
1.1: Passenger Type	5
1.3 Freight on Transit, Loaded and Unloaded	5
1.4: Mail Loaded and Unloaded.....	Error! Bookmark not defined.
2.0: SEA TRANSPORT STATISTICS	6
2.1: Passengers crossing at various ferry crossing stations in the Country	6
3.0: ROAD TRANSPORT STATISTICS.....	12
3.1: Accidents reported by number and type of Injuries	12
3.2: Number of Accident cases reported and persons killed	13
APPENDIX.....	14

List of Figures

Figure 1: Number of Passengers by Type at Banjul International Airport, 2020 – 2024 5

Figure 2: Freight (kgs) at Banjul International Airport, 2020 – 2024..... 6

Figure 4: Number of Passengers at various crossing stations 2020-2024..... 6

Figure 5: Accidents Reported and Persons Killed, 2018-2022 13

List of Acronyms and Abbreviations

GCAA	Gambia Civil Aviation Authority
GIA	Gambia International Airlines
EU	European Union
GPA	Gambia Ports Authority
GPF	Gambia Police Force
NRA	National Roads Authority
UNOPS	United Nations Office for Project Services

Foreword

This report presents the Transport Statistics of The Gambia for the period 2020-2024. It could serve as a catalyst to enhancing the transport sector of the country. The tourism, transport and communication statistics unit under the Directorate of Economic Statistics of the Gambia Bureau of Statistics (GBoS) data from the Gambia Civil Aviation Authority (GCAA), Gambia International Airlines (GIA), Gambia Ports Authority (GPA), the Gambia Police Force (GPF) and the National Roads Authority (NRA).

The data on air traffic movements is from the GCAA and GIA, and the data on sea transport is from GPA, while data on road accidents and number of registered vehicles data is from GPF and the data on the length of roads is from NRA.

The latest annual reports can be accessed on the Gambia Bureau of Statistics' website (<https://www.gbosdata.org/>). For users who have specific data needs, the tourism, transport and communication statistics Unit could offer the necessary assistance.

The Gambia Bureau of Statistics wishes to express its profound gratitude to the Statistics Units of GCAA, GIA, GPA, GPF and NRA for making available the necessary data for the compilation of the transport statistics. The bureau of statistics also wishes to thank the staff of the Tourism, Transport and Communication statistics unit for their efforts and dedication in their work and in producing this report. We hope that users will find this report useful.

Nyakassi M.B. Sanyang,

Statistician General

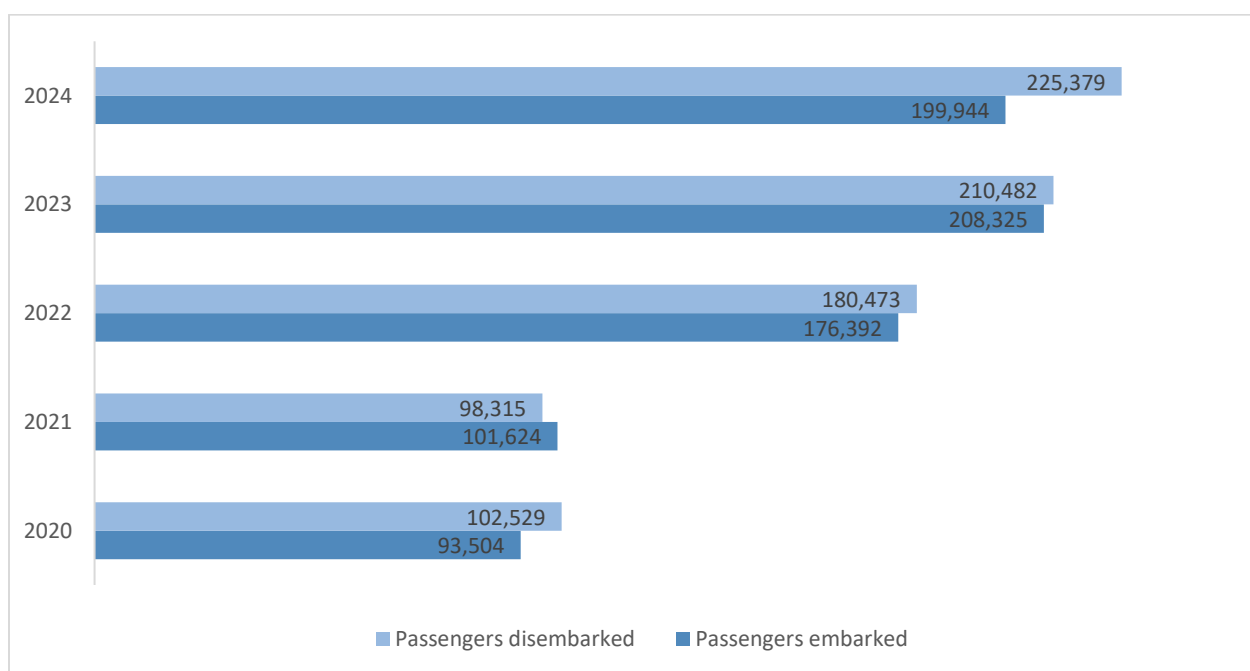
1.0: AIR TRANSPORTS STATISTICS

Air transport statistics is an important indicator to both the public and private sector. It shows how well nations are globalized and connected and promotes the efficient and timely movement of people and goods, thus leading to integration and economic growth. The air transport statistics in The Gambia comprises of different air transport movements, ranging from the movement of air crafts, passengers, freights and mails at the Banjul international Airport.

1.1: Passenger Type

The figure shows that disembarked passengers increased from 210,482 passengers in 2023 to 225,379 passengers in 2024. Similarly, the number of embarked passengers increased from 208,325 passengers in 2023 to 199,944 passengers in 2024.

Figure 1: Number of Passengers by Type at Banjul International Airport, 2020 – 2024

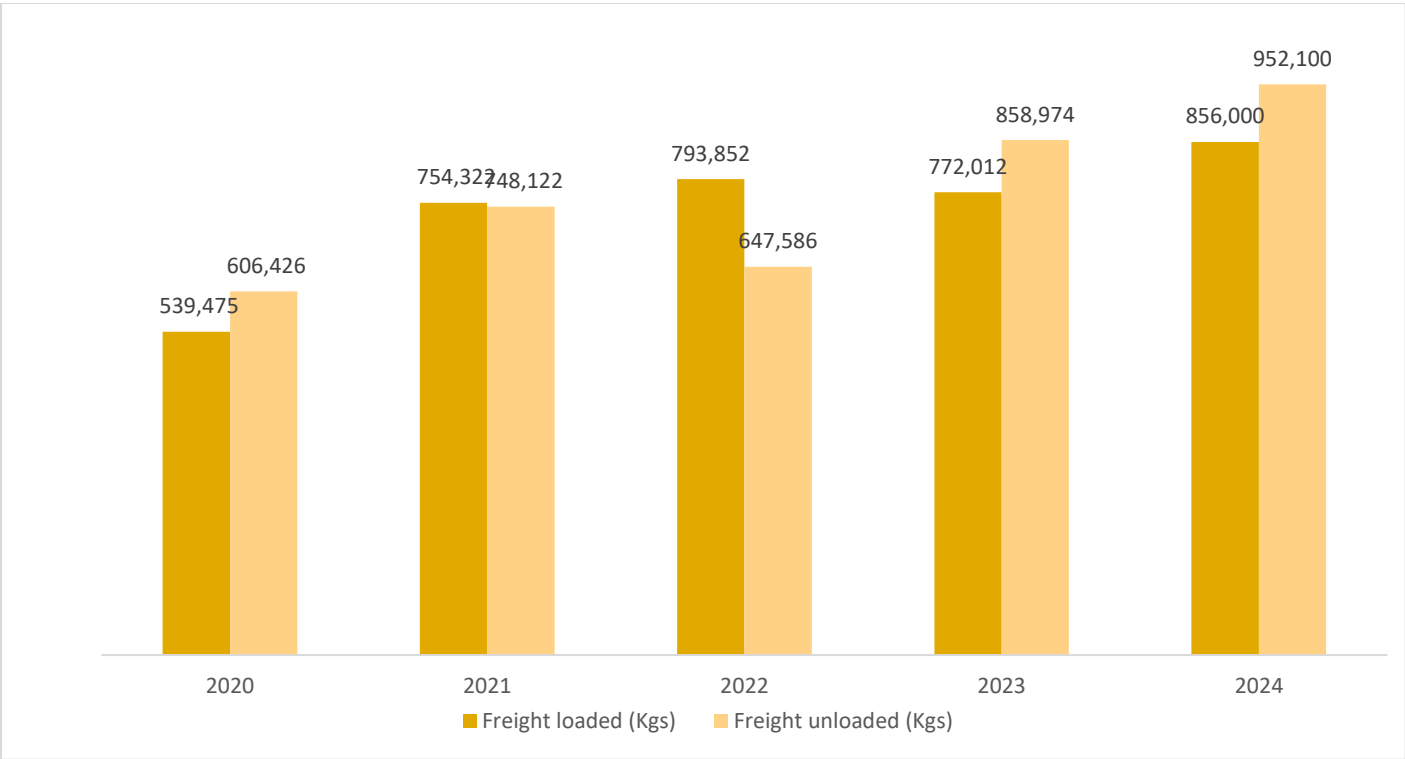


1.2 Freight Loaded and Unloaded

The weight of freight¹ unloaded, loaded both increased from 2023 to 2024. Looking at the figure below, the weight of freight unloaded increased by 10 percent from 858,974 kgs in 2023 to 952,100 kgs in 2024. Similarly, freight loaded increased from 772,012 kgs in 2023 to 856,000 kgs in 2024.

¹ The values for 2024 includes mail loaded and unloaded and measured in tonnes

Figure 2: Freight (kgs) at Banjul International Airport, 2020 – 2024



2.0: SEA TRANSPORT STATISTICS

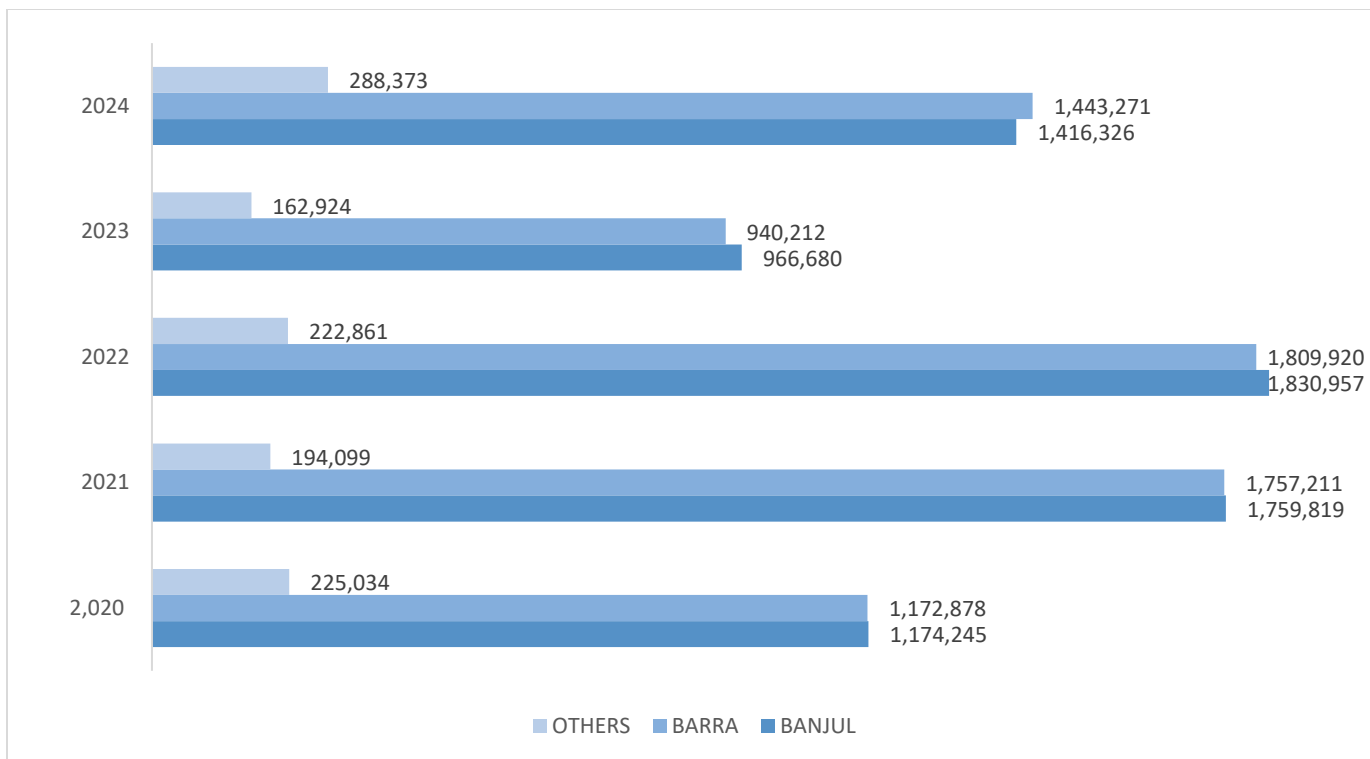
One important indicator for openness of an economy, confidence in its markets and the size of an economy for international traders and business personnel alike is the statistics on transportation of goods in and out of a country. The Gambia as a small open economy is known to be largely dependent on the international economy, sourcing almost all its major goods from other countries. The sea transport statistics mainly entails the number of goods handled, loaded and unloaded at the sea port in Banjul from maritime vessels.

2.1: Passengers crossing at various ferry crossing stations in the Country

The Banjul and Barra ferry crossing stations continue to be the most utilized in The Gambia, consistently handling the highest number of passengers each year. Although both stations experienced a decline in 2023, passenger numbers rebounded in 2024, with Banjul handling 1.42 million and Barra handling 1.44 million passengers.

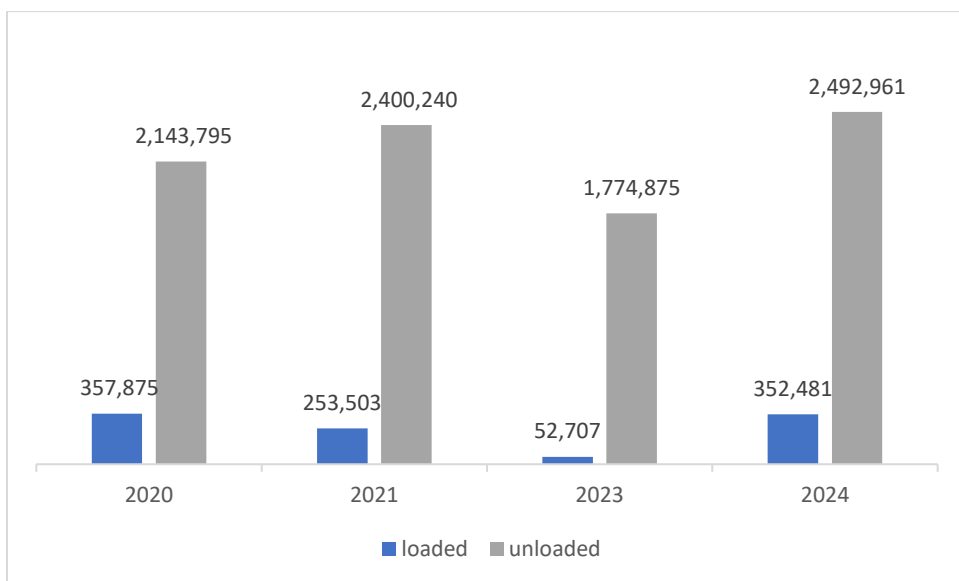
Other ferry stations, including Kaur, Janjanbureh, Barajali, and Bansang, also showed a significant increase from 162,924 passengers in 2023 to 288,373 passengers to 288,373 in 2024.

Figure 3: Number of Passengers at various crossing stations 2020-2024



2.2: Goods Handled from the Maritime Vessels

The total number of goods unloaded has increased from 1,774,875 tons in 2023 to 2,492,961 tons in 2024 similarly goods loaded increased from 52, 707 tons in 2023 to 352,481 tons 2024.



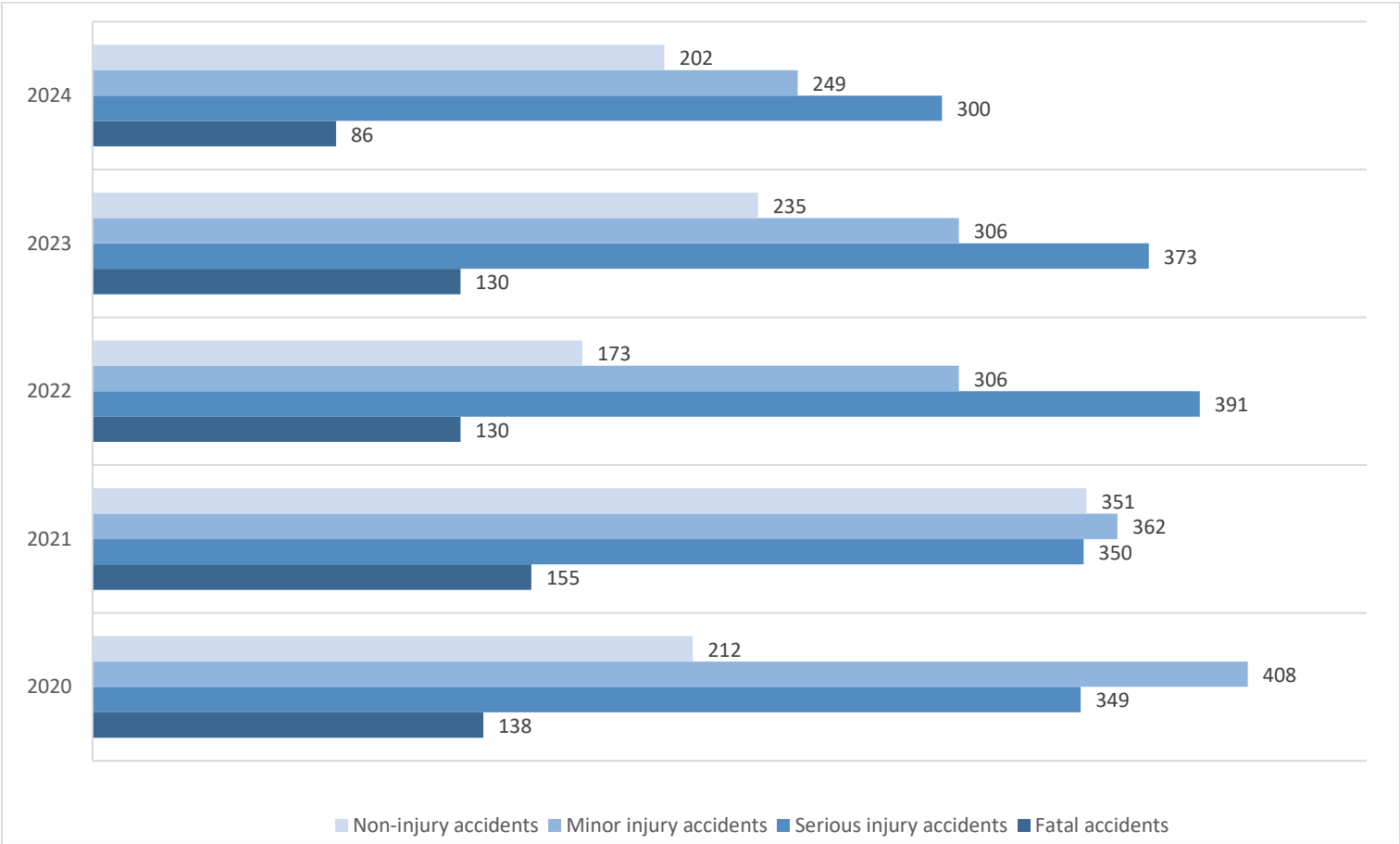
3.0: ROAD TRANSPORT STATISTICS

Road Transport Statistics provides very important statistics on number and types of accident cases reported to the traffic authorities including fatalities and injuries. It also provides information on length of primary and secondary roads as well as paved and unpaved roads available in the country and other types of roads such as tertiary. These statistics will go a long way to inform policy makers for evidence-based decision making especially in terms of road infrastructure, traffic facilities, rules and regulations and on road traffic repairs and maintenance works.

3.1: Accidents reported by number and type of Injuries

The figure below shows the types of accidents and their occurrence over the years. Fatal accidents decreased from 130 cases in 2023 to 86 cases in 2024, while serious injury accidents increased from 373 cases in 2023 to 300 cases in 2024. The number of minor injury accidents and non-injury cases both decreased from 306 and 235 in 2023 to 249 and 202 cases in 2024 respectively. Among the categories, serious injury accidents recorded the highest number of cases in both 2023 and 2024 while fatal accidents recorded the lowest accidents cases in both years under review.

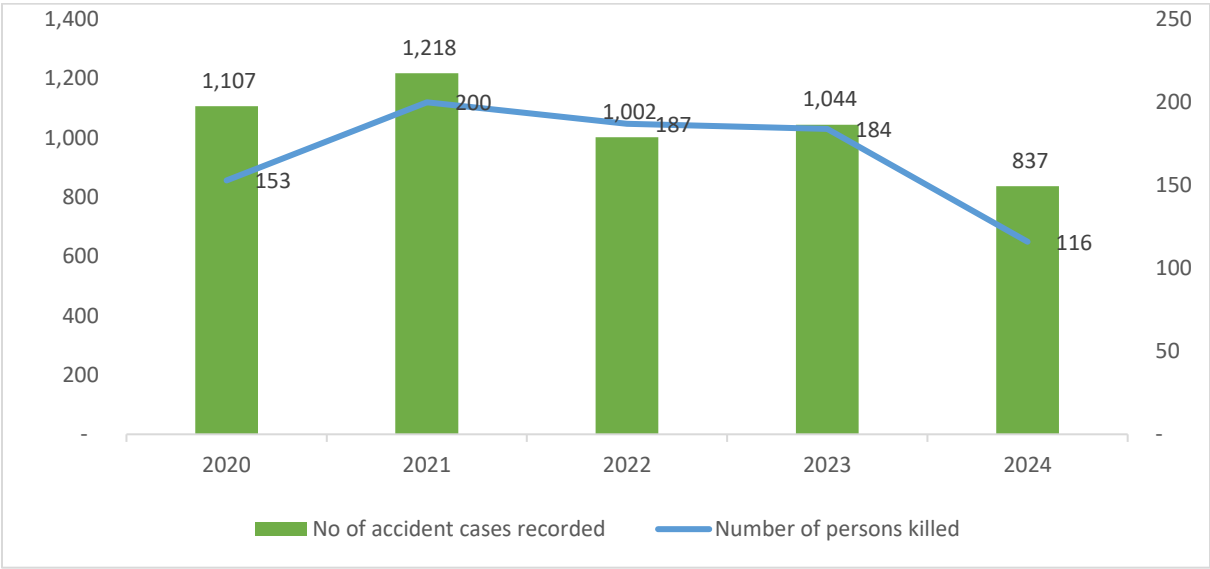
Figure 7: Number of Accident Cases Recorded by Type of Accident, 2020- 2024



3.2: Number of Accident cases reported and persons killed

The number of accident cases recorded has shown a decreasing trend for the periods 2020 to 2024. The number of cases dropped by 19.8 per cent from 2023 with 1,044 cases to 837 cases in 2024. Similarly, the number of people who died also decreased from 184 persons in 2023 to 116 persons in 2024 showing a significant drop.

Figure 4: Accidents Reported and Persons Killed, 2020-2022



APPENDIX

Table 1: Air traffic at Banjul International Airport by year, 2020 -2024

Air Traffic	2020	2021	2022	2023	2024
Aircraft Movements	1,135	1,542	2497	2402	1,763
Passengers disembarked	103,119	98,712	180,473	210,482	225,379
Passengers embarked	89,232	101,734	176,392	208,325	199,944
Total Passengers Handled	192,351	200,446	356,865	418,807	425,323
Freight unloaded (Kgs)	608,426	607,247	647,586	858,974	952,100
Freight loaded (Kgs)	540,884	760,887	793,852	772,012	856,000
Total Freight Handled*	1,149,310	1,368,134	1,441,438	1,630,986	1,808,100
Mail unloaded (Kgs)	5,624	23,274	8,781	7,310	-
Mail loaded (Kgs)	14,815	15,244	12,833	25,120	-
Total Mail Handled (Kgs)	20,439	38,518	21,614	32,430	-

Source: GCCA and GIA

* The values for 2024 includes mail loaded and unloaded and measured in tonnes

Table 2: Number of Passengers crossing at various stations 2020-2024

STATIONS	2,020	2021	2022	2023	2024
BANJUL	1,174,245	1,759,819	1,830,957	966,680	1,416,326
BARRA	1,172,878	1,757,211	1,809,920	940,212	1,443,271
OTHERS*	225,034	194,099	222,861	162,924	288,373

Source: Gambia Ferries Service Company

*The other ferry stations include Kaur, Janjanbureh, Barajali, and Bansang for 2024

Table 3: Goods (tons) handle at Seaport 2020-2024

year	loaded	unloaded	Total Goods Handled
2020	357,875	2,143,795	2,501,670
2021	253,503	2,400,240	2,653,743
2023	52,707	1,774,875	1,827,582
2024	352,481	2,492,961	2,845,442

Table 3: Accident Cases and Number of Persons killed or injured, 2020-2024

Year	No of accident cases recorded	(a) Fatal acciden ts	Number of persons killed or injured											Total number of persons killed annually
			Person involved (sex)		(b) Serious injury accidents	Person involved (sex)		(c) Minor injury accide nts	Person involved (sex)		(d) Non- injury accide nts	Person involved (sex)		
			M	F		M	F		M	F		M	F	
2020	1107	138	111	42	349	402	133	408	419	176	212	287	36	153
2021	1218	155	156	44	350	309	131	362	325	138	351	403	68	200
2022	1002	130	144	43	391	502	158	306	337	158	173	230	52	187
2023	1044	130	150	34	373	338	107	306	264	76	235	297	38	184
2024	837	86	73	43	300	319	120	249	220	98	202	286	37	116
Total	5208	639	634	206	1763	1870	649	1631	1565	646	1173	1503	231	840

Source: GPF